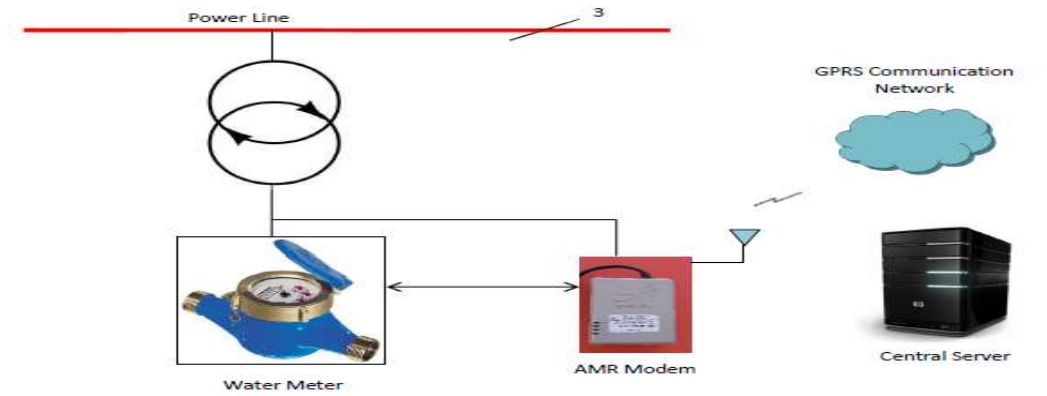


WATER AUTOMATIC METER READING

Introduction

AMR Modem is an intelligent device connected to Water Meter by means of Pulse/RS485. These smart metering systems are cost efficient & works with any water meter with pulse/RS485 output. The modem that collects information from water meter should transmit the information to the control center over GSM network using GPRS communication technology.

Architecture



Features:

- Data communication through GSM/GPRS.
- Inbuilt watch dog for reliable communication.
- Remote configuration through SMS.
- IP Protected.
- Inbuilt Battery.
- DOTA (Download Over the Air).